

VALUE-ADDED STEREOLITHOGRAPHY SOLUTION PROVIDER



PILOT Commercial Series



RSPRO Production Series

UnionTech
Create your Imagination

Shanghai Union Technology Corporation
Room 102, Unit 40, 258 Xinzhuang Rd, Shanghai, 201612, China
enquiry@uniontech3d.cn Tel: +86-021-64978786
www.uniontech3d.cn

UnionTech GmbH
Regus Berliner Carree, Berliner Allee 47, 64295 Darmstadt, Germany
info@uniontech3d.de Tel: +49 (0) 6151-2776067
www.uniontech3d.de

UnionTech
Create your imagination

About us

For nearly 20 years, Uniontech stereolithography (SL) 3D printing equipment has been developed and manufactured in an environment of intense regional competition. The Uniontech products offered for the international market of today reflect the experience of a global leader in stereolithography. Our equipment is robustly constructed for low cost of ownership from the initial purchase onwards while producing the highest quality parts. Parts produced on Uniontech SL equipment are highly accurate with excellent feature resolution and full density, smooth surfaces. A philosophy of open design relative to material usage demonstrates UnionTech's desire to provide customers with the best available product solutions. Explore the fresh dimension in SL 3D printing that UnionTech makes available in a full line of commercial and production scale machines. UnionTech Create your Imagination



RSPro Production Series

RSPro 600 / RSPro 800 / RSPro 1400 / RSPro 2100

A New Dimension in Stereolithography
3D Printing

- Cost-effective ownership throughout entire life cycle.
- Freedom to collaborate and innovate: **open design** for materials and machine access.
- Printed parts demonstrate **excellent sidewall quality** and **fine detail**, contributing to lower post-finishing requirements.

System Features

- Key components are of international top brands, Panasonic of Japan, Optowave /Germany, Scanlab of Germany.
- Automatic control of surface level and processing parameters.
- Convenient assembly and disassembly of platform.
- Granite recoater frame for enhanced recoating stability.
- Closed loop control strategy for: Platform movement/Laser power/Material level/Temperature/Vacuum.
- CE certification.

Technical Data

	RSPro 600	RSPro 800
Build Envelope Capacity	23.6 × 23.6 × 19.7 in (600 × 600 × 500 mm)	31.5 × 31.5 × 21.7 in (800 × 800 × 550 mm)
Accuracy <small>*Accuracy may vary depending on parameters, part geometry and size, pre-processing or post-processing methods, materials and environment.</small>	Part size < 3.9 in (100 mm): ±0.004 in (±0.1 mm) Part size ≥ 3.9 in (100 mm): ±0.1% × L	Part size < 3.9 in (100 mm): ±0.006 in (±0.15 mm) Part size ≥ 3.9 in (100 mm): ±0.15% × L
Beam Size	Nominal 0.005 -0.008 in (0.12 - 0.20mm)	Nominal 0.005 - 0.008 in (0.12 - 0.20 mm)
Layer Thickness	0.002 in (0.05 mm) minimum; 0.01 in (0.25 mm) maximum	0.003 in (0.07 mm) minimum; 0.01 in (0.25 mm) maximum
Weight	3968 lb (1,800 kg)	4409 lb (2000 kg)
Machine Size (WxDxH)	62.9 × 63.5 × 83.5 in (1598 × 1612 × 2137 mm)	70.8 × 63.1 × 83.4 in (1798 × 1602 × 2196 mm)
	RSPro 1400	RSPro 2100
Build Envelope Capacity	55.1 × 27.6 × 19.7 in (1400 × 700 × 500 mm)	82.6 × 27.6 × 23.6 in (2100 × 700 × 600 mm)
Accuracy <small>*Accuracy may vary depending on parameters, part geometry and size, pre-processing or post-processing methods, materials and environment.</small>	L < 100 mm: ±0.2mm, L≥100 mm: ±0.2% × L	L < 100 mm: ±0.2 mm, L≥100 mm: ±0.2% × L
Beam Size	Nominal 0.005 -0.008 in (0.12 - 0.2 mm)	0.0039 - 0.0055 in, 0.0295 - 0.0334 in (0.1-0.14 mm, 0.75-0.85mm)
Layer Thickness	0.004 in (0.1 mm) minimum; 0.01 in (0.25 mm) maximum	0.004 in (0.1 mm) minimum; 0.01 in (0.25 mm) maximum
Weight	6277 lb (2,847 kg)	11133 lb (5,050 kg)
Machine Size (WxDxH)	113.5 × 6.9 × 94.3 in (2882 × 1952 × 2395 mm)	163 × 107 × 109 in (4130 × 2720 × 2770 mm)
Optical System	2 laser and 2 galvanometer	3 laser and 3 galvanometer

RSPro 600 / RSPro 800 / RSPro 1400 / RSPro 2100

Laser	Solid-state frequency tripled Nd: YVO ₄
Wavelength	355 nm
Input Data File Format	STL
Recoater Frame	Granite
Systems Control	Closed-loop
Temperature Range	72–79 °F (22–26 °C)
Maximum Change Rate	1 °C/hour
Relative Humidity	< 40 % non-condensing
Platform Change Carts	Manual offload cart (optional)
Processing and Finishing	Post-Curing Unit (optional)
System Warranty	One-year warranty (under UnionTech's Purchase Terms and Conditions)



유니온텍 공식 총판
(주)에이엠코리아

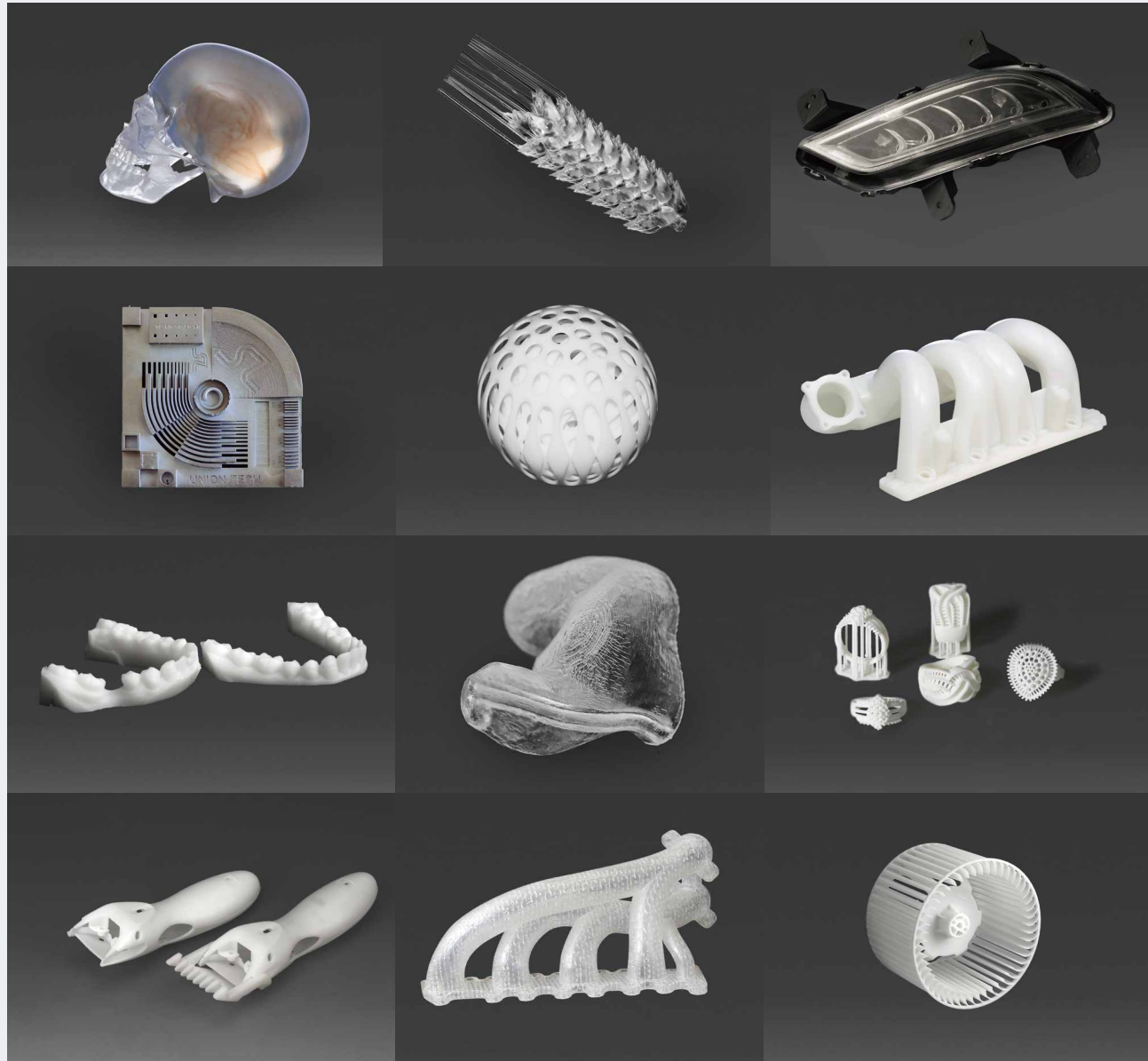
경기도 의왕시 이마로40
(포일동 안덕원 IT밸리) 0동 610호
TEL 031-426-8265 / FAX 031-8084-3008
E mail. amk@amkorea21.com

www.amkorea21.com

Versatile Application Range · High Accuracy · Excellent Surface Aesthetics



* Specifications are subject to change; consult with your sales representative for confirmation of current offering.



UnionTech
Create your imagination